



OFFERED FOR LEASE

4830 River Green Pkwy, Duluth, GA 30093

7,762 - 20,768 RSF • 4.12 Acres • 4.6 Parking Spaces per 1,000 RSF



- Highly improved office space
- Small warehouse with dock high door
- Modern, attractive and well maintained office building
- Located in fast growing Gwinnett County
- Close proximity to: Johns Creek, Atlanta Athletic Club, St. Ives Country Club, Chattahoochee National Recreation Area and Peachtree Golf Center

www.atlantaleasing.com/4830rivergreen



All information contained herein is believed to be accurate but is not warranted.

DAVID W. AYNES
404.348.4448
david@atlantaleasing.com



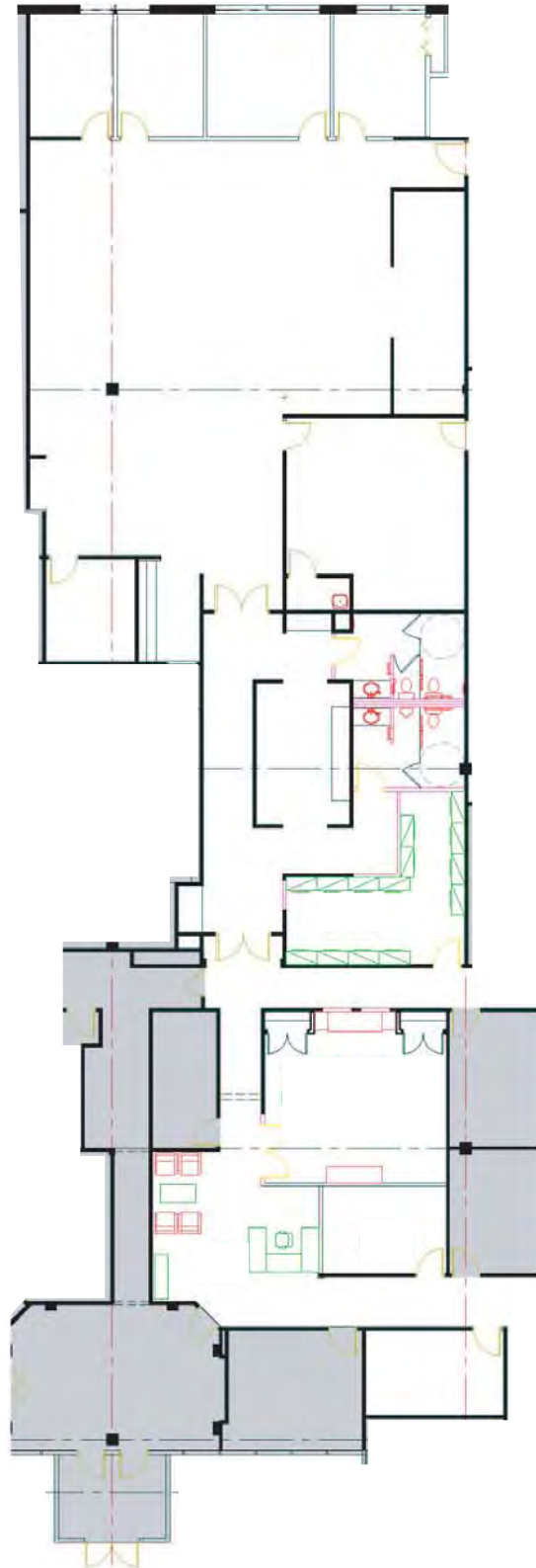
**ATLANTA LEASING
& INVESTMENT**



OFFERED FOR LEASE

4830 River Green Pkwy, Duluth, GA 30093

7,762 RSF • 4.12 Acres • 4.6 Parking Spaces per 1,000 RSF





OFFERED FOR LEASE

4830 River Green Pkwy, Duluth, GA 30093

13,006 RSF • 4.12 Acres • 4.6 Parking Spaces per 1,000 RSF

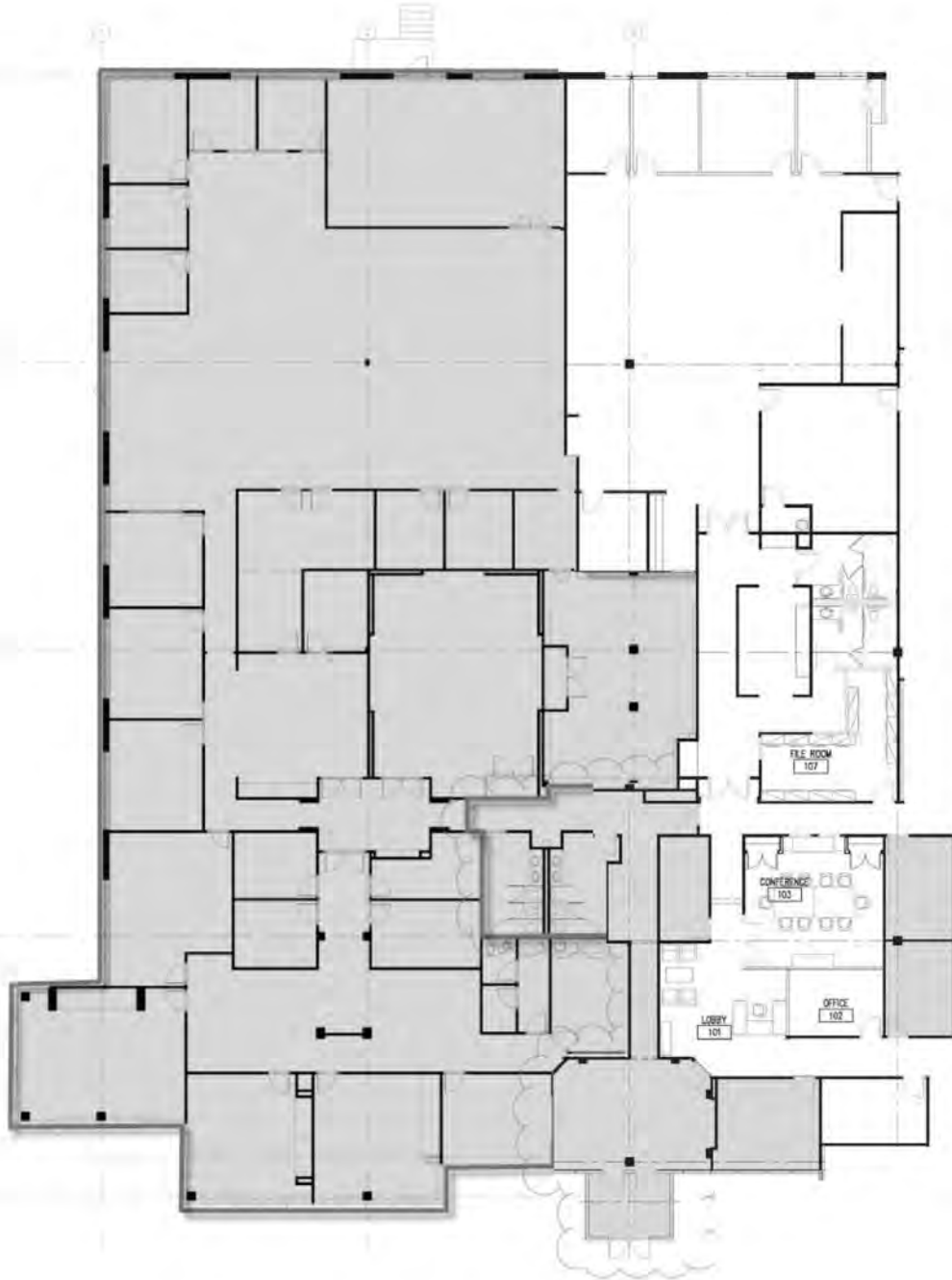




OFFERED FOR LEASE

4830 River Green Pkwy, Duluth, GA 30093

20,768 RSF* • 4.12 Acres • 4.6 Parking Spaces per 1,000 RSF



*20,768 RSF includes white and grey areas