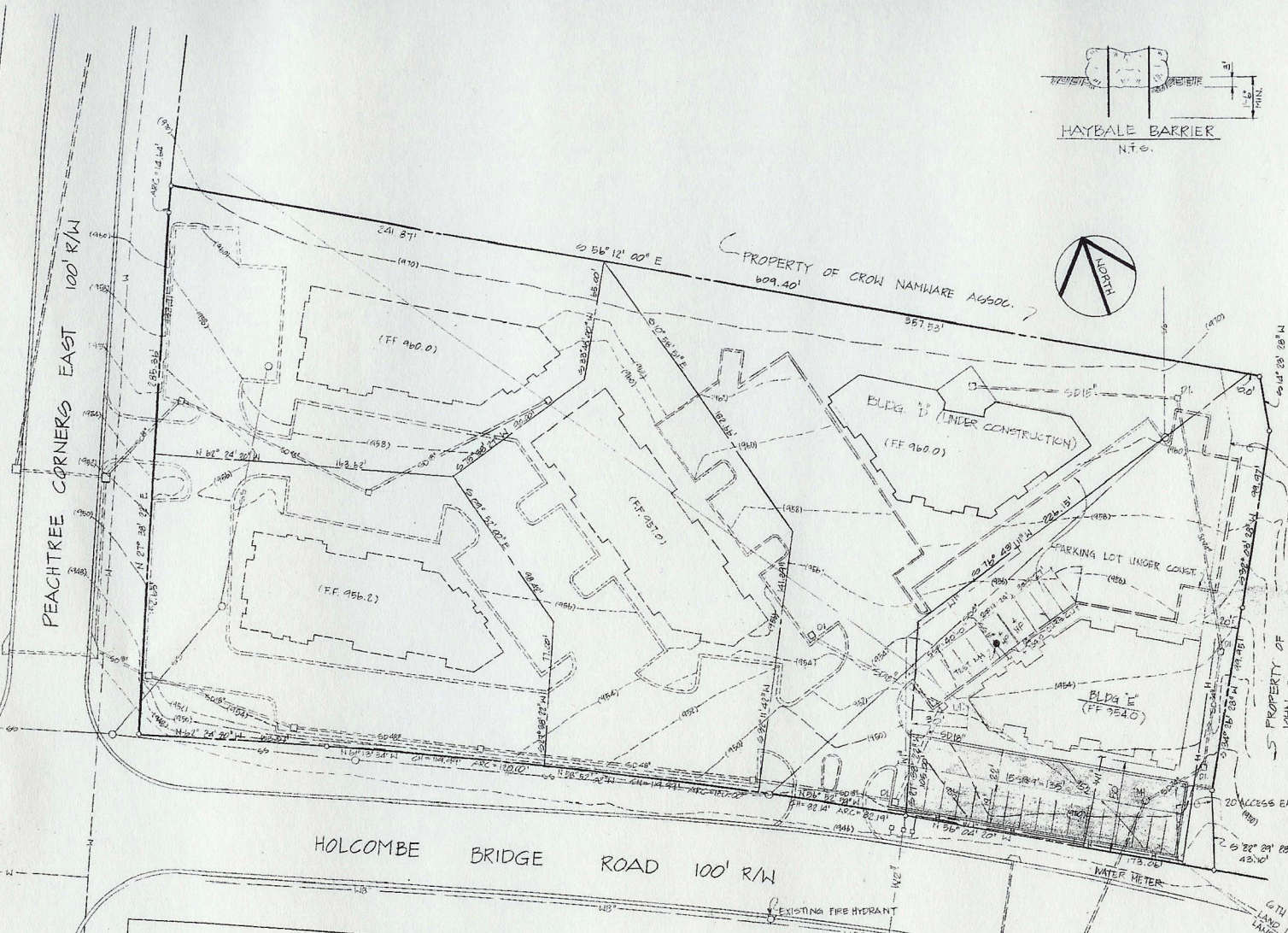
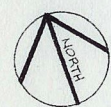
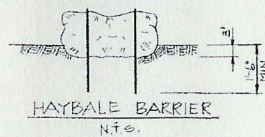


**LEGEND**

	EXISTING	PROPOSED
CONTOURS	---(954)---	---954---
SPOT ELEV.		+ 954.0
WATER LINE	---W---	---W <sup>P</sup> ---
SANITARY SEWER	---SS <sup>R</sup> ---	---SS <sup>P</sup> ---
STORM DRAIN	---SD <sup>R</sup> ---	---SD <sup>P</sup> ---
MANHOLE	○	●
DROP INLET	□	■
HEADWALL	∩	∩
FIRE HYDRANT	⊙	⊙
CATCH BASIN	△	△
HAY BALES		—H—H—H—



- EROSION CONTROL MEASURES:**
1. PROTECT ADJACENT PROPERTY WITH CONTIGUOUS LINE OF ANCHORED HAYBALES AT TOE OF SLOPE.
  2. ALL DISTURBED AREAS NOT COVERED BY OTHER CONSTRUCTION SHALL BE GRASSED WITH KENTUCKY 31 PEGSUE AT THE RATE OF 40 LBS./ACRE.
  3. EROSION CONTROL MEASURES ARE TO BE ACCOMPLISHED PRIOR TO ANY OTHER CONSTRUCTION ON SITE.
  4. AREAS TO BE GRASSED SHALL BE STABILIZED WITH ANCHORED DRILL AT THE RATE OF 1.5 TONS PER ACRE TUCKED INTO SOIL WITH A STRAIGHT BLADE DISC.
  5. LANDSCAPING TO BE COMPLETED AS SOON AS PRACTICAL AFTER CONSTRUCTION IS COMPLETED.

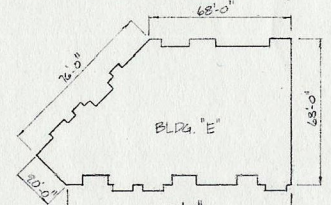
- GENERAL NOTES:**
1. NO HAZARDOUS USES ARE INVOLVED.
  2. NO FREE-STANDING IDENTIFICATION SIGN PLANNED.
  3. ALL PARKING SPACES TO BE 9' x 19' EXCEPT HANDICAPPED PARKING TO BE 12' x 19' (S.T.E.)

**TOPOGRAPHIC SURVEY BY:**  
HASKIN, DEKES & BARNWELL  
SURVEYORS & ENGINEERS, INC.  
LAFAYETTEVILLE, GA. 30528-7181 DATED 7-10-90

**OWNER & DEVELOPERS:**  
PEACHTREE CORNERS, INC.  
CROSSING CENTER - SUITE 209  
WILKESBORO, GA. 30074 PH. (404) 448-8223

**CONSULTING ENGINEERS:**  
GUILLEBAUD, BHEET AND HALDROFF, INC.  
CONSULTING ENGINEERS  
4151 MEMORIAL DRIVE SUITE 214-A  
DORAVILLE, GA. 30033

PROPERTY IS PRESENTLY ZONED C-2



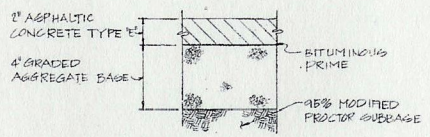
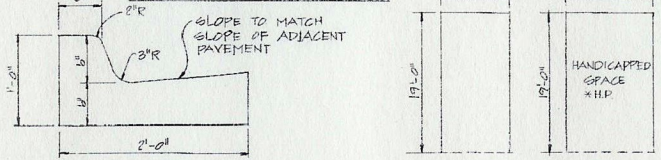
**BUILDING 'E' DIMENSIONS**  
(SEE ARCHITECTURAL PAGES)  
BLDG TO BE USED FOR OFFICES ONLY - NO WAREHOUSING

Permit # 20174  
Issue Date 7/10/2007

**CROSSING CENTER PARK  
BUILDING "E"**

**GRADING PLAN-BLDG 'E'**

SCALE: 1" = 30'-0"  
BLDG 'E' SITE CONTAINS 7846 ACRES



TYP. PARKING SPACE DETAIL  
N.T.S.

**CORRECTED PLANS**

NOTE: NO NEW STORM DRAINAGE STRUCTURES REQ'D. ALL STORM DRAINAGE SHOWN IS EXISTING.

